

Boating

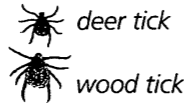
1. Slow no wake within 100 feet of all shorelines, including islands, and within 100 feet of all swimmers.
2. Slow no wake at High Bridge Bend (River Mile 28.6) and West Channel Narrows (River Mile 27 near MN shore). Buoys will be in place to mark these locations when the spring high water recedes.
3. Slow no wake whenever the Stillwater gauge reaches 683. Call (651) 290-5861 for automated gauge level readings.
4. Water skiing is prohibited after 12:00 p.m. (noon) on Saturdays, Sundays, and legal holidays.
5. Approved life jackets for each person are required on your vessel.
6. Children under 13 are required to wear a life jacket.
7. Use of personal watercraft is prohibited north of Boomsite Landing.

Safety

1. Bring your own drinking water. Treat river water before drinking to avoid giardia, a serious stomach irritant.
2. Wear sunscreen, sunglasses, and a hat to prevent sunburn.
3. Protect your feet with river shoes, water sandals, or old shoes. Fish hooks, glass, and rocks can injure your feet.

Safety Continued

5. Canoe and kayak users should watch out for motorboats. Paddle near the shore and head into wakes to avoid capsizing.
6. Check for ticks often and know the symptoms of Lyme disease. Deer ticks are common along the Riverway and some carry the bacteria that cause the disease.



poison ivy



7. Know how to identify poison ivy.

Behavior

1. Don't jump from cliffs, bridges, rope swings, or trees.
2. Use alcohol responsibly.
3. Quiet hours are 10:00 p.m. to 6:00 a.m.
4. Possession or use of fireworks is prohibited.
5. Leave freshwater mussels and mussel shells in their place. Mussels can be injured or can die from being returned to the river in the wrong position.
6. Keep off areas closed for restoration.
7. Pets must be on a leash no longer than 6 feet and under control.
8. Leave wildflowers and historical artifacts untouched. Report any artifacts to the National Park Service.

Camping

1. Open camping on islands only. Areas suitable for camping are available on a first-come, first-served basis.
2. Camping stay limit is 7 consecutive nights.

Firewood

1. Firewood may not be gathered from any island.
2. Firewood that originates from more than 50 miles away is prohibited.
3. No cutting of live trees or dead standing trees.

Trash and Human Waste

1. Carry out your trash.
2. Glass containers are prohibited.
3. Dispose of human waste. Vault toilets are available on Mile Long Island. If not using those toilets or onboard toilets, use of portable toilets is required. Human waste not deposited in toilets is a health hazard. It also contaminates island environments and water quality.

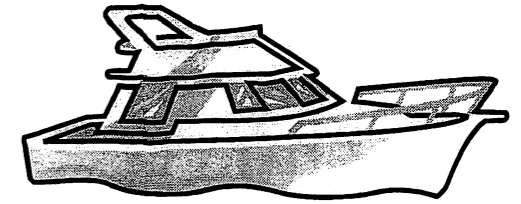
Discover clean water, lush landscapes, and quiet solitude along the St. Croix National Scenic Riverway, a national park that with your help protects 252 miles of wild and scenic river corridor.



National Park Service
St. Croix National Scenic Riverway



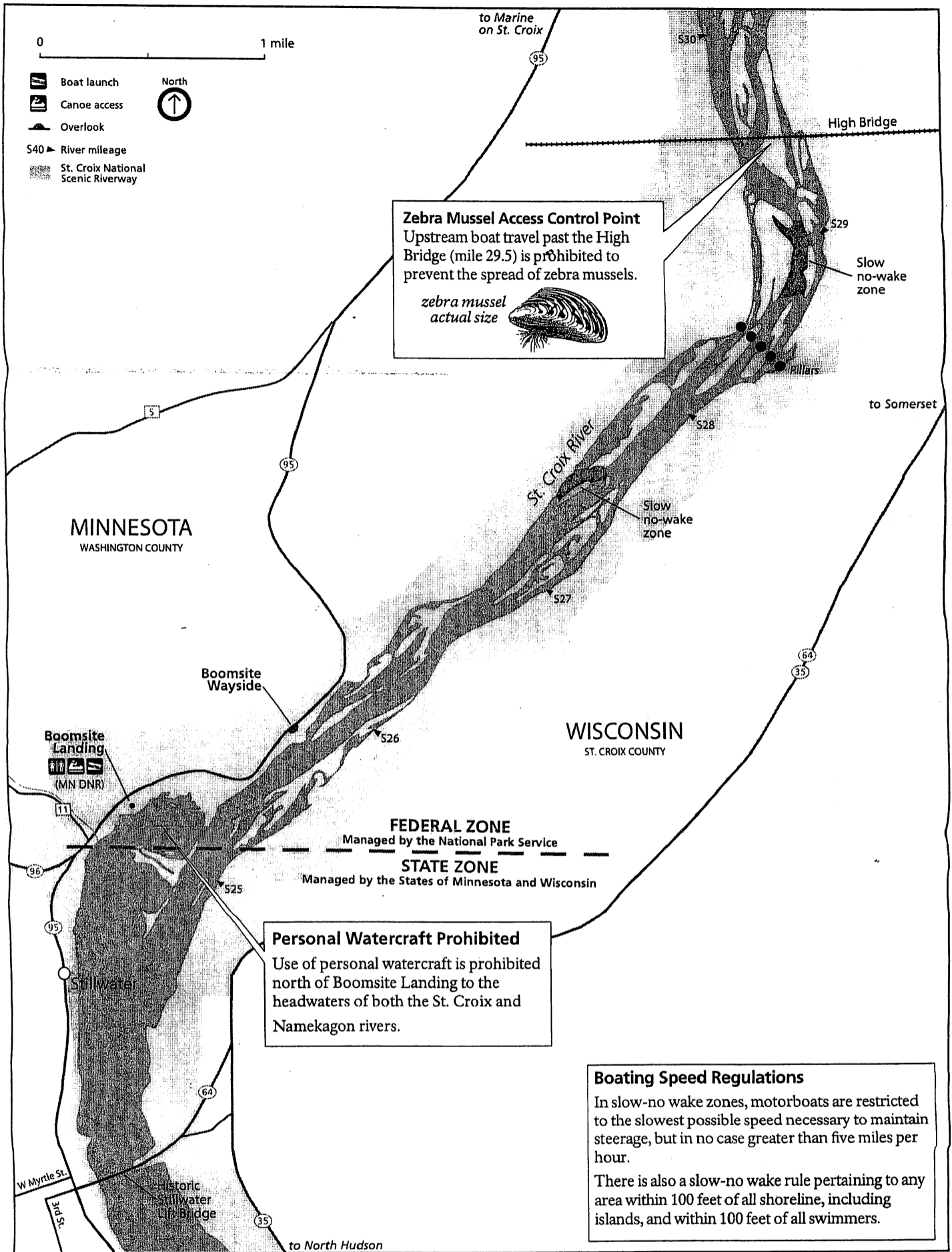
St. Croix River Map 9: High Bridge to Boomsite Landing



For generations, St. Croix River islands have been favorite places to spend summer afternoons and weekends. All of the islands that exist in this stretch of river have been here for over fifty years, and some for over a hundred years! Yet these environments are fragile. Loss of vegetation and exposed tree roots are warning signs that an island's stability is threatened. Please help to protect the islands by limiting the wake thrown by your boat, observing length of stay limits, and respecting areas that are closed for restoration.

Regulations

The regulations on the St. Croix River between the Soo Line High Bridge and Boomsite Landing differ from those on other parts of the St. Croix National Scenic Riverway. This is a very popular section for houseboats, cabin cruisers, pontoons, runabouts, and fishing boats. Here are the regulations that apply to use on this stretch of river.



**St. Croix River Section 9:
High Bridge to
Boomsite Landing
St. Croix National Scenic Riverway**

Contact the National Park Service
St. Croix River Visitor Center
St. Croix Falls, Wisconsin
(715) 483-2274
Website: www.nps.gov/sacn



Emergency Information

Call 911 if you need an immediate response from any location.

To report a violation:

1. On the Minnesota side of the river, contact the Washington County Sheriff: (651) 439-9381.
2. On the Wisconsin side of the river, contact the St. Croix County Sheriff: (715) 386-4701.

